



In questo articolo i dati raccolti sono supportati solo da evidenze istologiche.

**AUTOLOGOUS TOOTH GRAFT : A HISTOLOGICAL  
COMPARISON BETWEEN DENTIN MIXED WITH  
XENOGRAFT AND DENTIN ALONE**

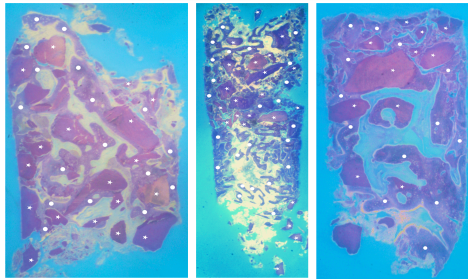


Fig1

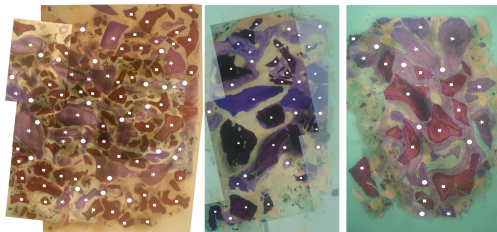


Fig2

**Figures legend**

Fig.1 Overviews of a first group biopsy at low magnification: dentin matrix granules (indicated by white stars) originated from whole tooth completely surrounded by newly formed bone (woven bone indicated by white circles) were visible. No inflammatory or other adverse reaction is visible around the particles (Magnification 8x – Toluidine Blue).

Fig.4 Overviews of a second group biopsy at low magnification: dentin matrix granules (indicated by white stars) originated from whole tooth and Xenograft (Biooss) (indicated with white square) completely surrounded by newly formed bone (woven bone indicated by white circles) were visible. No inflammatory or other adverse reaction is visible around the particles (Magnification 8x – Toluidine Blue).